

©2020 Hangzhou Hikvision Digital Technology Co., Ltd. All rights reserved.

#### About this Manual

The Manual includes instructions for using and managing the Product. Pictures, charts, images and all other information hereinafter are for description and explanation only. The information contained in the Manual is subject to change, without notice, due to firmware updates or other reasons. Please find the latest version of this Manual at the Hikvision website (<https://www.hikvision.com/>). Please use this Manual with the guidance and assistance of professionals trained in supporting the Product.

**HIKVISION** and other Hikvision's trademarks and logos are the properties of Hikvision in various jurisdictions. Other trademarks and logos mentioned are the properties of their respective owners.

#### Disclaimer

TO THE MAXIMUM EXTENT PERMITTED BY APPLICABLE LAW, THIS MANUAL AND THE PRODUCT DESCRIBED, WITH ITS HARDWARE, SOFTWARE AND FIRMWARE, ARE PROVIDED "AS IS" AND "WITH ALL FAULTS AND ERRORS". HIKVISION MAKES NO WARRANTIES, EXPRESS OR IMPLIED, INCLUDING WITHOUT LIMITATION, MERCHANTABILITY, SATISFACTORY QUALITY, OR FITNESS FOR A PARTICULAR PURPOSE. THE USE OF THE PRODUCT BY YOU IS AT YOUR OWN RISK. IN NO EVENT WILL HIKVISION BE LIABLE TO YOU FOR ANY SPECIAL, CONSEQUENTIAL, INCIDENTAL, OR INDIRECT DAMAGES, INCLUDING, AMONG OTHERS, DAMAGES FOR LOSS OF BUSINESS PROFITS, BUSINESS INTERRUPTION, OR LOSS OF DATA, CORRUPTION OF SYSTEMS, OR LOSS OF DOCUMENTATION, WHETHER BASED ON BREACH OF CONTRACT, TORT (INCLUDING NEGLIGENCE), PRODUCT LIABILITY, OR OTHERWISE, IN CONNECTION WITH THE USE OF THE PRODUCT, EVEN IF HIKVISION HAS BEEN ADVISED OF THE POSSIBILITY OF SUCH DAMAGES OR LOSS.

YOU ACKNOWLEDGE THAT THE NATURE OF INTERNET PROVIDES FOR INHERENT SECURITY RISKS, AND HIKVISION SHALL NOT TAKE ANY RESPONSIBILITIES FOR ABNORMAL OPERATION, PRIVACY LEAKAGE OR OTHER DAMAGES RESULTING FROM CYBER-ATTACK, HACKER ATTACK, VIRUS INSPECTION, OR OTHER INTERNET SECURITY RISKS; HOWEVER, HIKVISION WILL PROVIDE TIMELY TECHNICAL SUPPORT IF REQUIRED.

YOU AGREE TO USE THIS PRODUCT IN COMPLIANCE WITH ALL APPLICABLE LAWS, AND YOU ARE SOLELY RESPONSIBLE FOR ENSURING THAT YOUR USE CONFORMS TO THE APPLICABLE LAW. ESPECIALLY, YOU ARE RESPONSIBLE, FOR USING THIS PRODUCT IN A MANNER THAT DOES NOT INFRINGE ON THE RIGHTS OF THIRD PARTIES, INCLUDING WITHOUT LIMITATION, RIGHTS OF PUBLICITY, INTELLECTUAL PROPERTY RIGHTS, OR DATA PROTECTION AND OTHER PRIVACY RIGHTS. YOU SHALL NOT USE THIS PRODUCT FOR ANY PROHIBITED END-USES, INCLUDING THE DEVELOPMENT OR PRODUCTION OF WEAPONS OF MASS DESTRUCTION, THE DEVELOPMENT OR PRODUCTION OF CHEMICAL OR BIOLOGICAL WEAPONS, ANY ACTIVITIES IN THE CONTEXT RELATED TO ANY NUCLEAR EXPLOSIVE OR UNSAFE NUCLEAR FUEL-CYCLE, OR IN SUPPORT OF HUMAN RIGHTS ABUSES.

IN THE EVENT OF ANY CONFLICTS BETWEEN THIS MANUAL AND THE APPLICABLE LAW, THE LATER PREVAILS.



This product and - if applicable - the supplied accessories too are marked with "CE" and comply therefore with the applicable harmonized European standards listed under the EMC Directive 2014/30/EU, the RE Directive 2014/53/EU, the RoHS Directive 2011/65/EU.



replacement of a battery with an incorrect type that can defeat a safeguard (for example, in the case of some lithium battery types);  
- disposal of a battery into fire or a hot oven, or mechanically crushing or cutting of a battery, that can result in an explosion;  
- leaving a battery in an extremely high temperature surrounding environment that can result in an explosion or the leakage of flammable liquid or gas; and  
- a battery subjected to extremely low air pressure that may result in an explosion or the leakage of flammable liquid or gas

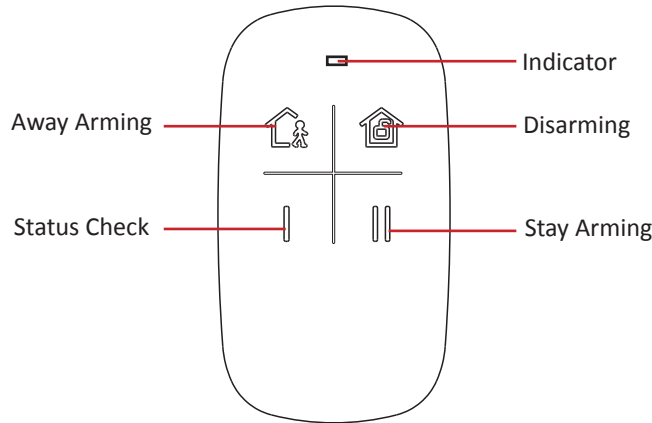


2012/19/EU (WEEE directive): Products marked with this symbol cannot be disposed of as unsorted municipal waste in the European Union. For proper recycling, return this product to your local supplier upon the purchase of equivalent new equipment, or dispose of it at designated collection points. For more information see: [www.recyclethis.info](http://www.recyclethis.info)



2006/66/EC (battery directive): This product contains a battery that cannot be disposed of as unsorted municipal waste in the European Union. See the product documentation for specific battery information. The battery is marked with this symbol, which may include lettering to indicate cadmium (Cd), lead (Pb), or mercury (Hg). For proper recycling, return the battery to your supplier or to a designated collection point. For more information see: [www.recyclethis.info](http://www.recyclethis.info)

## 1 Appearance



### Lock/Unlock Device

Hold + for 3 s to lock.

Hold + for 3 s to unlock

### Indicator

Green Light Flashes Once: Power On

Orange Light Flashes: Press Key

Red Light Flashes 4 Times: Device Locked/Device Formatted

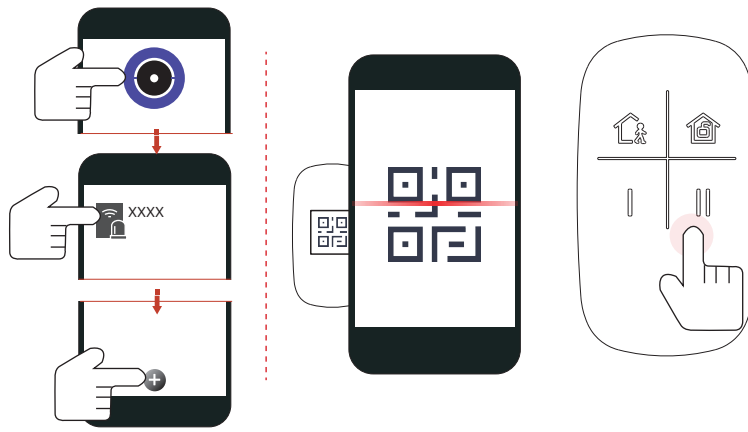
Green Light Flashes 4 Times: Device Unlocked

## 2 Enrollment

1. Download and install the App.
2. In the App, tap the icon "+" and scan the QR code or input the serial No. on the peripheral.
3. Trigger the peripheral, and it will be automatically enrolled to the control panel.

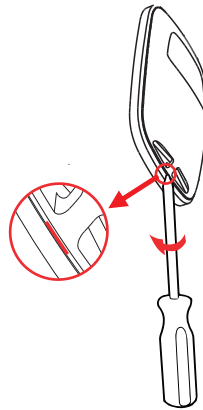
#### Note:

Do not disassemble the device with sharps.

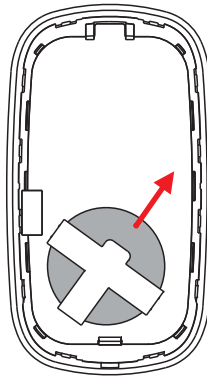


### 3 Replace Battery

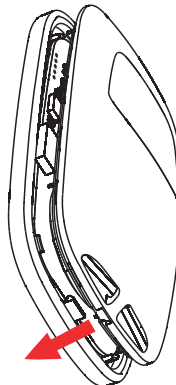
1. Dig the groove to disassemble the device. Remove the front panel.



2. Replace the battery.



3. Assemble the front panel and rear panel.



#### CAUTION

RISK OF EXPLOSION IF BATTERY IS REPLACED BY AN INCORRECT TYPE.  
REPLACEMENT OF A BATTERY WITH AN INCORRECT TYPE THAT CAN DEFEAT A SAFEGUARD.

#### CAUTION

CHEMICAL BURNING DANGER  
DO NOT SWALLOW THE BATTERY  
KEEP NEW AND USED BATTERIES AWAY FROM THE CHILDREN.

IF YOU THINK BATTERIES MIGHT HAVE BEEN SWALLOWED OR PLACED INSIDE ANY PART OF THE BODY, SEEK IMMEDIATE MEDICAL ATTENTION.

#### CAUTION

IF THE BATTERY COMPARTMENT DOES NOT CLOSE SECURELY, STOP USING THE PRODUCT AND KEEP IT AWAY FROM CHILDREN.

#### CAUTION

DISPOSE OF USED BATTERIES ACCORDING TO THE INSTRUCTIONS AND LOCAL REGULATION.

**Note:** Do not disassemble the device with sharps.

## 4 Function

### Key Operation

Function	Key	Description	Indication
Away	Arming Key	Press the key for related operation	Blue LED flashes twice
Stay	Configurable Key		Blue LED flashes twice
Disarm	Disarming Key		Green LED flashes twice
ClearAlarm	Configurable Key		Green LED flashes twice
System Status	Configurable Key		AX PRO Arming LED (green) flashes twice AX PRO Disarming LED (green) flashes twice
PA	Configurable Key		Successful Operation: Green LED flashes twice Failed Operation: Red LED flashes twice
Medical	Configurable Key		Successful Operation: Green LED flashes twice Failed Operation: Red LED flashes twice
Configurable Key Type: I, II, Arm+I, I+II, Arm+Disarm, Disarm+II			


### Other Functions

Function	Description	Indication
Arming Progress ( EN )	<ol style="list-style-type: none"> <li>1. Press the Arm key, and the AX PRO starts arming preparing (3 s) , which makes the green LED flash.</li> <li>2. The AX PRO starts fault check. If there is fault being detected, the orange LED flashes.</li> <li>3. The AX PRO enters the exit delay, and the green LED flashes within the delay duration that can be set via AX PRO client.</li> <li>4. The AX PRO shows the result. Blue LED indicates successes, and the red LED indicates a failures.</li> </ol>	<b>Arming Preparing :</b> Green LED flashes 3 times <b>Exit Delay :</b> Green LED flashes once <b>Armed :</b> Green LED flashes twice <b>Arming Failed:</b> Red LED flashes twice <b>Fault Detected:</b> Orange LED flashes
Lock and Unlock	<ol style="list-style-type: none"> <li>1. Press the Disarm +I or Arm +II to lock all keys, and the red LED flashes for a successful lock that makes no data transmission between the keyfob and AX PRO.</li> <li>2. Press the Disarm +I or Arm +II again to unlock all keys, and the green LED flashes for a successful unlock that makes data transmission restored between the keyfob and AX PRO.</li> </ol>	<b>Locked :</b> Red LED flashes 4 times <b>Unlocked :</b> Green LED flashes 4 times

## 5 Formatting

1. Remove the battery.
2. Hold the Away Arming key, and reinstall the battery at the same time to power the keyfob on . The formatting is completed after the red LED flashes 3 times.

## 6 Set Up with App

You can view the battery level of the keyfob.  
Tap the  button to enter the settings page.

Function	Description
Enable Keyfob	Slide to green to enable the keyfob.
Linked User	Set the keyfob linked user.
Function Key Settings	Set the single and combination functions of the I key and the II key

## 7 Specification

Transmission frequency	868 MHz
Modulation	2 GFSK
Transmission speed	4.8 kbps
Transmission power	10 dBm
RF range	900 m (open area)
Indicator	3-color LED
Key	4
Battery	CR2032 x 1 (included) 210mAh
Battery voltage	3V
Min. voltage	2.1V +/- 5%
Standard battery life	3 years
Operating temperature	- 10 °C to 55 °C (14 °F to 131 °F) - 10 °C to 40 °C (14 °F to 104 °F) EN certified
Material	Panel (plastic)+ gasket (rubber)
Dimension	63.2 mm × 35.2 mm × 11.3 mm
Weight	16 g
Color	White
PS Type	Type C
Low Voltage Level	2.45V±0.02V
Consumption	Quiescent current: 1.17uA Max current: 40mA
Classification	Portable
ACE type	Type B

**Note:** When the low voltage message appears there will be at least 30 days of use.

The communication of wireless devices like keyfob was identified by the SN number, which will be encrypted during transmission. The SN number was leading with character Q to Z, and following 8 digits, like Q02235774. This is a maximum number of differs of 100,000,000 (10 to the power of 8 [digits]).